

RMC-super thin single acting hydraulic steel cylinder

- Low height is suit for working in narrowness; Short stroke can block up times and times
- The surface of plunger is finished with chrome plate to protect the using of longevity of the product.
- Plunger has the function of retracting automatically.



DESCRIPTION OF PARTS

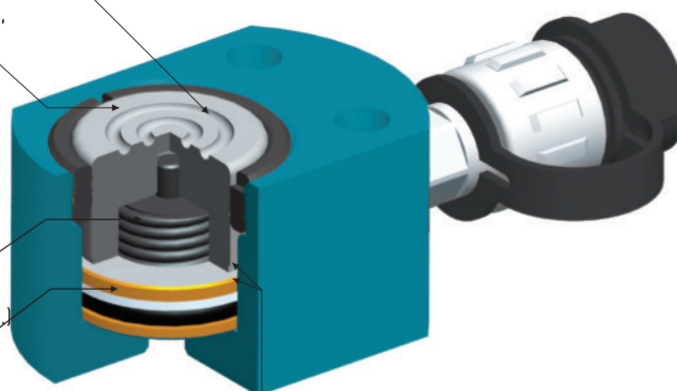
1. Principal axis
(avoid axis break when it is overloading)

2. Stopping ring
(to protect the cylinder when the stroke get to top, absorb heaviness on the other side.)

3. Spring (provide the capability of quick flexing)

4. Brass ring (use high quality of brass to joint, to protect the status of overloading and absorb heaviness on the other side.)

5. Cylinder wall and principal axis
(they can avoid eroding and less friction by chrome plate)



Item.no	Output (t)	Stroke (mm)	Effective area (cm ²)	Oil capacity (l)	Height of Product (mm)	Extended Height (mm)	Outside dia (Φ mm)	Bore dia (Φ mm)	Principal axis Dia (Φ mm)	Oil supply hole Thread (ZG)	Saddle Protrusion From plgr (mm)	Weight (kg)
RMC-051	5	11	4.9	0.0078	43	54	51×40	30	25	NPT1/4"	1	0.65
RMC-101	10	11	11.3	0.016	47	58	81×56	43	38	3/8"-19	2	1.5
RMC-201	20	11	22	0.031	52	63	100×77	60	53	3/8"-19	2	2.7
RMC-301	30	12	31.1	0.05	63	75	115×95	75	63	3/8"-19	2	4.5
RMC-501	50	16	56.7	0.113	69	85	138×115	95	85	3/8"-19	2	7.4
RMC-1001	100	16	95	0.211	86	102	185×160	130	110	3/8"-19	2	15.5
RMC-1501	150	18	162.8	0.338	93	111	234×200	164	144	3/8"-19	2	25.4
RMC-2001	200	18	224.2	0.505	100	118	274×239	189	169	3/8"-19	2	38.1