

ME-1225

Cordless Tube Expanding Tool

Quick & Easy Connections for PEX-a material

- Faster to connect PEX ring to PEX-a pipe
- Compact and portable, weight 2.45KGS with battery, easy for one handed operation
- More than 70 expansions per charge

Expanding heads Cycles of expansions

16x1.8/2.2	4-6 cycles
20x1.9/2.0	6-8 cycles
25x2.3	8-12 cycles
32x2.9	22-25 cycles

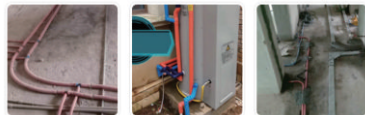
Suit for various projects



Heat pump system

Interior Triple supply system

Water heater engineering



Pre-embedded circulating water

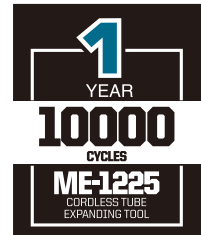
Outdoor central water heater

Prestorage radiator waterway

Auto-rotating head makes uniform expansion



Expanding heads



Specifications

Max expanding dia. and wall thickness range:	≤25X3.5mm, ≤32X2.9mm
Voltage/capacity:	18V/2.0Ah
Charging Time:	Approx.40mins
Charging Voltage:	AC100V-240V; 50-60Hz
Weight:	2.45kgs(with battery)
Tool Size:	193x94x270mm
Standard expanding heads:	16x1.8/2.2mm, 20x1.9/2.0mm, 25x2.3mm